



“

**A week on the
spectacular waters
of Simon's Town**

**EFSA SOUTH AFRICA
PRESENTS:
THE GAME CHAMPIONSHIPS
6th - 10th MAY 2024**

**FALSE BAY YACHT
CLUB**

**King George Way, Simon's Town,
Cape Town, 7975**



BRIEF HISTORY

Simon's Town is one of South Africa's oldest towns, which lies 35 kilometers outside of Cape Town.

The South African Navy is based in this neighborhood, which is well-known for its extensive marine heritage. Simon's Town is well-known for its stunning beaches, fascinating past, and the African penguin colony that calls it their home. In the historical mile that runs from the train station to Jubilee Square. Charming buildings may be seen between mountains that are home to numerous scenic hiking routes.



WELCOME LETTERS

Dear fellow EFSA anglers and friends,

For 2024's EFSA European Game Fishing Championships we welcome you to Simon's Town in South Africa!

It has been a while since EFSA have visited the productive waters to fish for our prestigious pins. Our friends from SADSAA have been regulars fishing our European waters in various boat fishing events. So it is a great opportunity for our members to visit their country.

Quite a few game anglers will be happy to return to these shores as quite a few years back they would have left with fond memories of those big fish being caught.

When we have been talking about the preparations for this event I have become more and more impressed by what Nick Nel and his organising committee have arranged for these championships.

Anybody familiar with South Africa will be looking forward to the local cuisine and the general wild life.

Especially the non fishing companions will enjoy both of these like visiting the Boulders beach penguin colony or exploring the South African Naval Museum.

I wish SADSAA a huge success with running our EFSA Game Fishing Championships!



Marcus Wuest
EFSA President



A warm welcome to all the anglers, dignitaries, families, and friends, to this, the 2024 EFSA Big Game Championships. This tournament has been a long time in the planning and is the culmination of an enormous amount of effort that began back in 2021. We are truly excited and feel immensely privileged to be able to host such a prestigious event and thank EFSA for the trust they have placed in us to do this.

Simon's Town, in our host city of Cape Town, is without a doubt an incredible venue; rich in history and culture. As a base from which to leave and return daily, I am sure you will find it ranks amongst the best in the world. On the days that you and your families are able to explore the town and its surrounds, I am confident you will not be disappointed. It is certain that you are all in for a busy and exiting week of angling.

South African Deep Sea Angling Association and our hosts, Western Province Deep Sea Angling Association, have an incredible tournament planned. Our thanks to them and their organising committee for putting this all together. Equally, I would like to thank False Bay Yacht Club for making their beautiful venue available to us without reserve. I am sure you will receive only the best South African hospitality on offer throughout your stay.

We are deeply indebted to our Provincial bodies that so willingly host these prestigious events every year. It is no easy task to put tournaments like this together and the contribution and effort by the provinces, its anglers, skippers and committees does not go unnoticed nor unappreciated.

We must also thank the anglers, who make these competitions so enjoyable and something that all look forward to year after year. Finally, to all the competitors, I wish you tight lines and fair weather. Make your countries and yourselves proud. Fly your flags high whether on the water or at the venue, and most importantly, have fun.



Chris Schorn
SADSAA President



I am delighted that the EFSA Game fishing championship will be held at Simon's Town in the Western Cape of South Africa, some 40 kilometres South of Cape Town. We are looking forward to fishing for yellow fin tuna, in some of the best waters in the world for that species. This will also be a great venue for the anglers' families with Cape Town and its excellent scenery being so close at hand. There is also the chance to go on safari, visit the local wineries, see the penguins on the local beaches, go whale watching on the False Bay coast, take a charter cruise to Seal Island, go Scuba diving or snorkelling at Cape Radd or just laze on the spectacular local beaches. My thanks to SADSAA and particularly Nick Nel for organising what I am sure will be an excellent championship with some spectacular catches.



Andy Smith
EFSA Game Festival
Officer

Dear Fellow Anglers,

On behalf of Western Province it is an absolute pleasure to host the EFSA Big Game Championships in South Africa. We are very excited to host the 2024 Championship in the wonderful Simon's Town, Cape Town. The venue of Simon's Town is known to many big gamefish anglers and has produced some wonderful fish over the years. We invite you to join us and discover this magic coastline and come and enjoy the big fight with our majestic Yellowfin Tuna.

We hope that the participants in this edition of the world championships will leave here with good memories and many friends made and I look forward to meeting you all and hosting you in Simon's Town Cape Town.



Colin Joubert
Western Province
Chairman



BOULDERS BEACH

A protected colony of African penguins may be seen here, and wooden pathways allow visitors to see them in their natural environment. Additionally, a great swimming beach is located nearby and visitors can often swim alongside these stunning locals.



PLACES OF INTEREST

TABLE MOUNTAIN

One of the 7 natural wonders of the world. The Cableway takes you to the summit in under 5 minutes and the cable car's rotating floor ensure that all visitors get a 360 degree aerial view of the city.



V&A WATERFRONT

The V&A Waterfront is a 123-hectare multi-use destination. It offers local and international visitors a cosmopolitan mix of experiences ranging from leisure, shopping and exclusive entertainment.



THE BLACK MARLIN

The Black Marlin has earned a reputation for its seafood, award-winning wine list, and incredible views. House specialities include Cape Rock lobster, oysters, and mussels. This restaurant is located just outside of Simon's Town on the road to Cape Point, but it's well worth a slight detour.

MONOCLE & MERMAID

M&M prides itself on fantastic coffee, beer, and burgers. Their breakfasts menu features such delights as banana bread French toast, an all-day option, and build-your-own-breakfast menu.

VINEYARDS & WINE TASTING

GLENWOOD VINEYARDS

GlenWood is a fairly unique location. The farm is positioned in the little-known Robertsvlei valley, close to Cape Town and Franschhoek, and surrounded by breathtaking natural features. They have won numerous awards for the vineyards hand-crafted wines, they ensure to use only the best materials and sustainable viticulturist techniques.

EAGLES NEST

Eagles' Nest is cradled in the secluded Constantia Valley on some of the steepest vineyards in South Africa, allowing for the creation of rare, distinct and exceptional wines.



GROOT CONSTANTIA

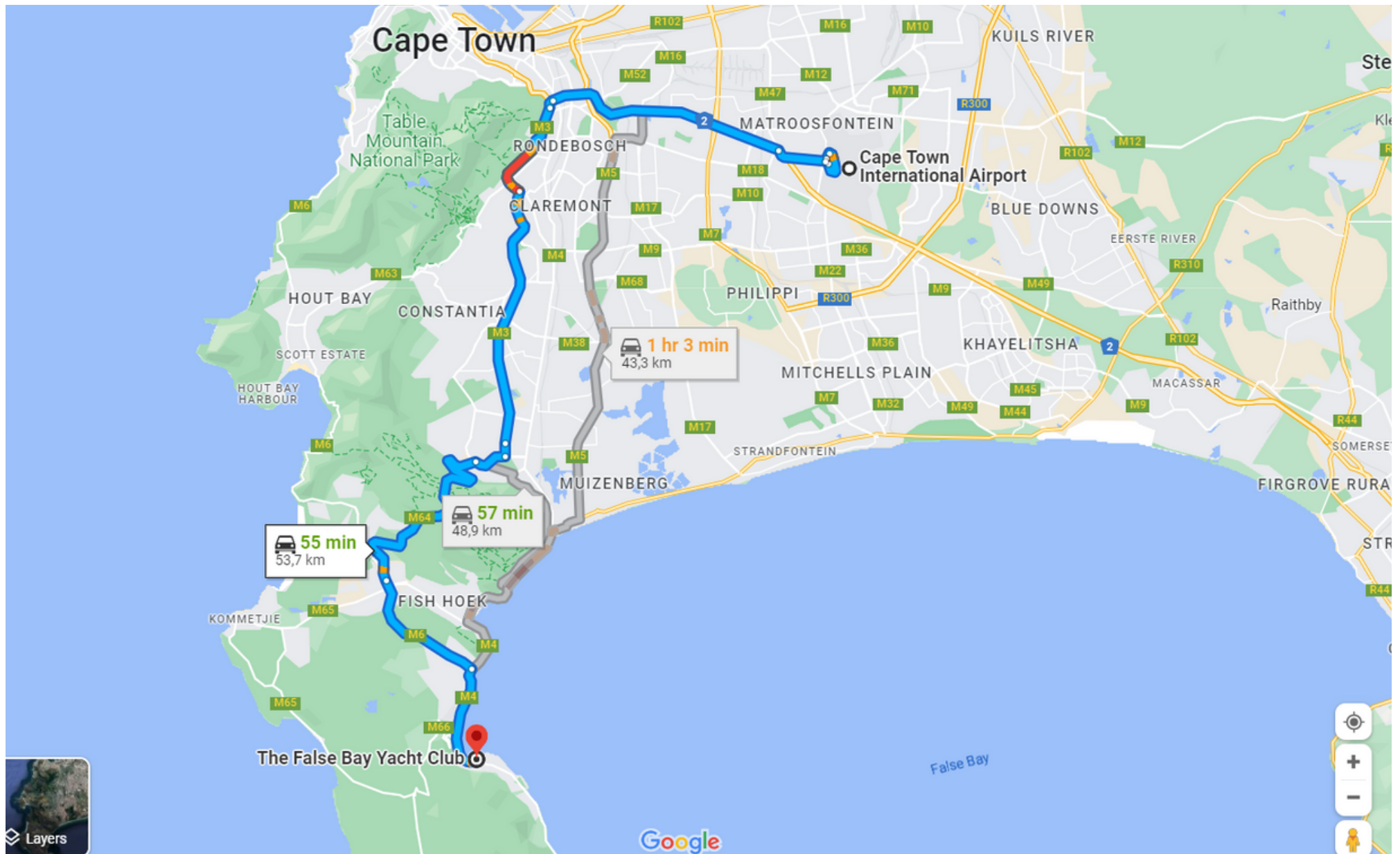
Groot Constantia is South Africa's oldest wine producing estate, (est: 1685). Situated 20 minutes from the Cape Town CBD and one of Cape Town's Big 7 tourist attractions

STEENBERG

Steenberg Farm in Constantia offers guests a selection of wine tasting experiences, with a Wine Tasting Bar, Tasting Lounge and Outdoor Terrace to choose from. With infinity pools and reflective water features set before some of the most remarkable scenery in Cape Town



AIRPORT TO THE YACHT CLUB



PREFERRED PLACE OF BOOKING

AHA QUAYSIDE HOTEL

Perfectly positioned on the water's edge of Simon's Town yacht basin, aha Simon's Town Quayside Hotel offers magnificent views over False Bay and the majestic Simon's Kloof Mountains. This modern property, with nuances of nautical elements reflecting the history of the town is situated along the Cape Point Route and offers unique accommodation, shopping and dining experiences for all.



Tea/Coffee facilities | Air con | In-room digital safe |
Mini bar fridge | En-suite bathroom | 24 hour
reception | Wi-Fi connectivity | Limited on-site parking

Contact Quayside Hotel:

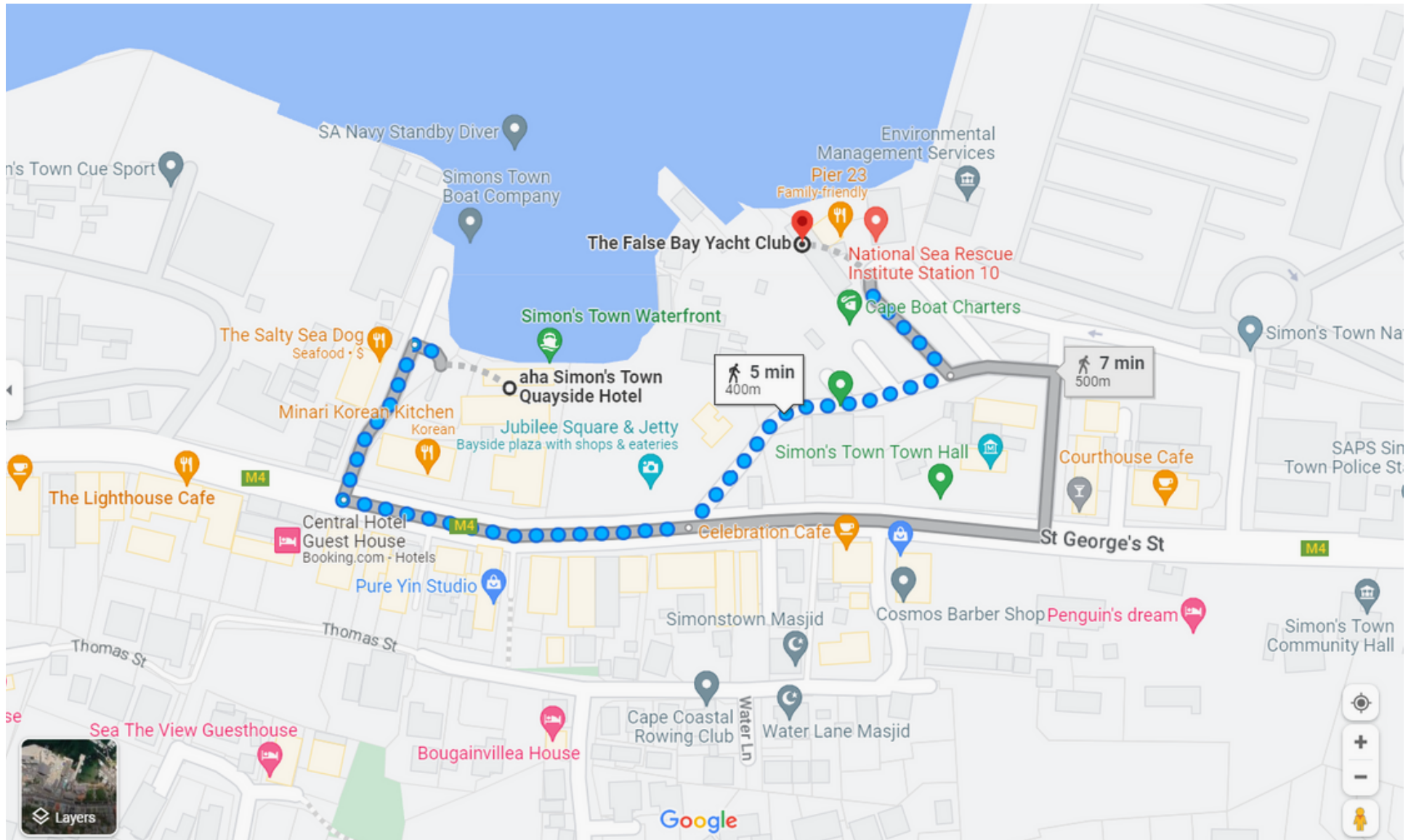
+27 21 786 3838

Jubilee Square | St Georges Street |

Simon's Town | 7975

reservations@quayside.co.za

DISTANCE FROM QUAYSIDE HOTEL TO THE YACHT CLUB



MARINER GUESTHOUSE

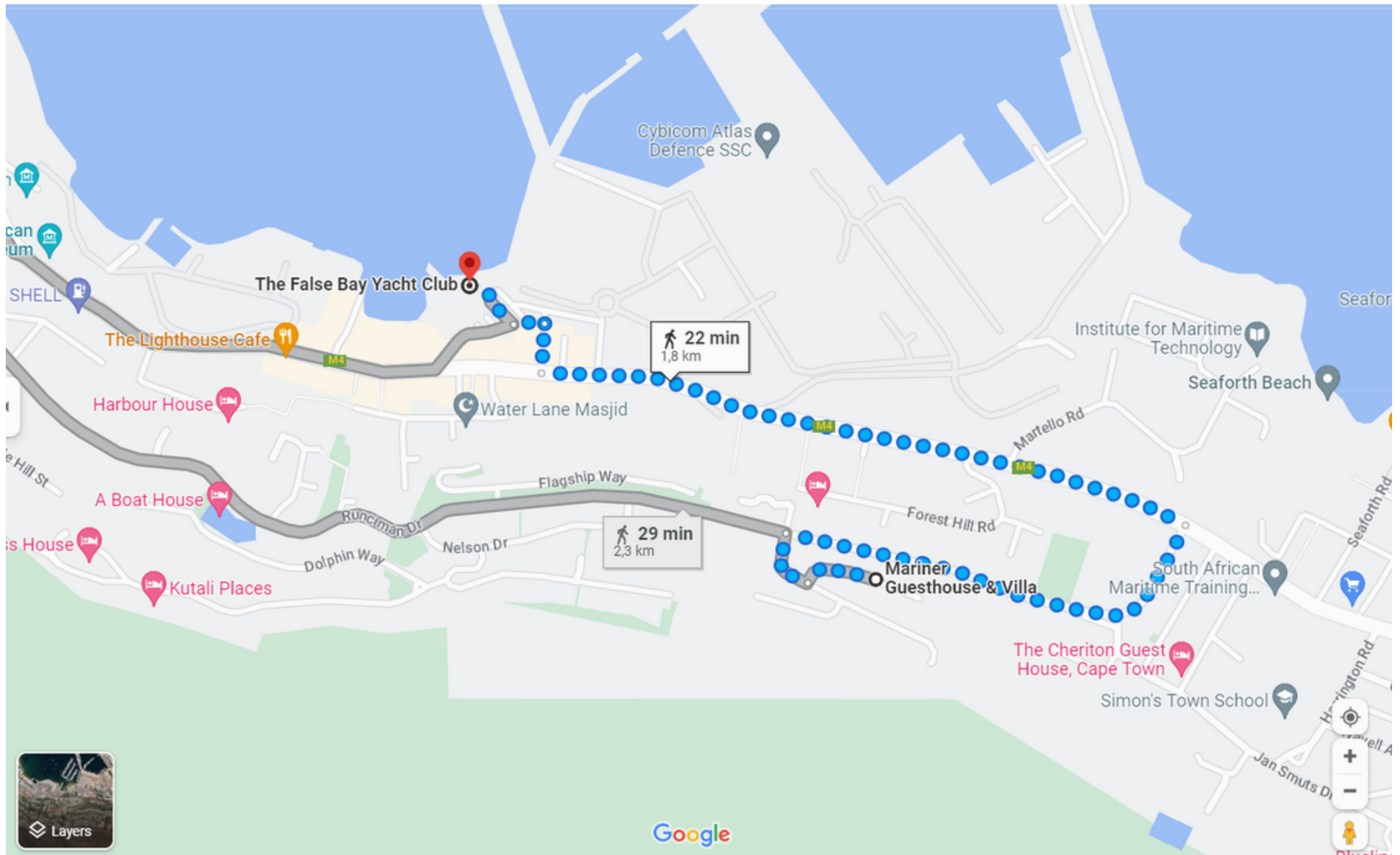
Custom built and located on the mountainside overlooking the Simon's Town harbour and False Bay. Mariner Guesthouse & Villa offers breath-taking sea views and is within walking distance of restaurants and beaches. We proudly offer style, comfort and friendly hospitality.



Contact Mariner Guesthouse:
+27 21 786 4528 or +27 79 514 8978
info@marinerguesthouse.co.za

WiFi | DSTV | Heating & Cooling
Tea/Coffee/Fridge/Microwave | Parking
B&B or Self-catering | Lunch/Dinner/Picnics

DISTANCE FROM MARINERS GUESTHOUSE TO THE YACHT CLUB



SOME GREAT CATCH

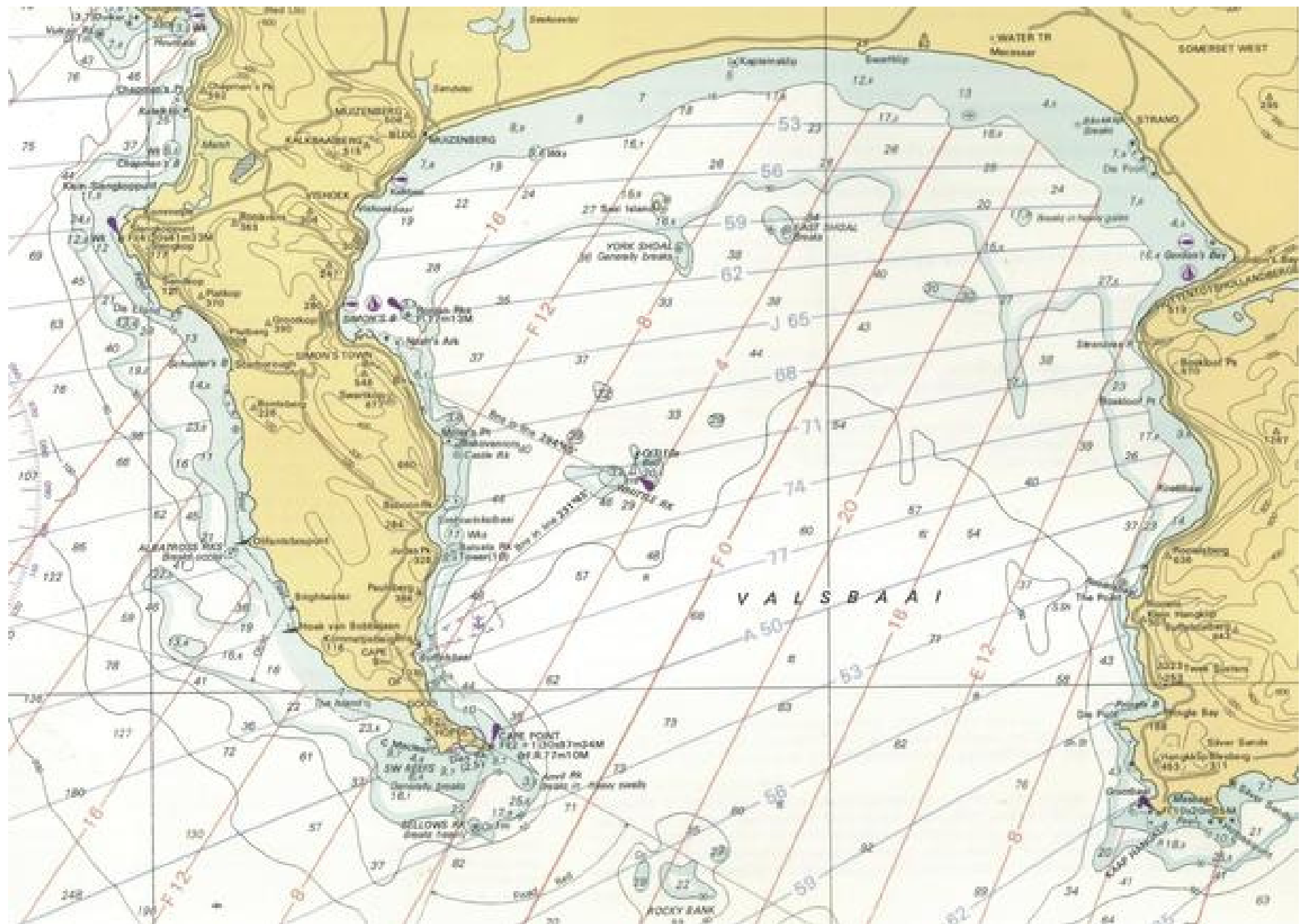
The size of Yellowfin Tuna ranges from 15kg to 120kg. Longfin Tuna from 8kg to 34kg. Big Eye Tuna from 35kg to 130kg. The commercial tuna fleet from Cape Town has reported of Yellowfin Tuna and Big Eye Tuna carcasses weighing at 135kg+. Bluefin Tuna has also been caught during the last season with one weighing in at 135kg.

Fishing methods used are that of trolling on the backline with various spread of favourite lures (Surface lures or deep swimming lures). Other methods used are baiting by means of chumming or chunking of sardines, Japanese mackerel and spinning with spinners or jigging for Longfin Tuna (Albacore).

Fish are usually located by means of spotting bird activity, Tuna Pole Boats, Long liners and Hake trawlers.



GEOGRAPHICAL MAP OF FASLE BAY



RULES FOR EFSA INTERNATIONAL

BIG GAME TOURNAMENT 2024

INDEX

	<u>PAGE</u>
1. BOATS AND SKIPPERS (CAPTAINS)	16
2. FULL RELEASE TOURNAMENT	16
3. TACKLE, EQUIPMENT AND RULES	16
4. TOURNAMENT ADJUDICATING COMMITTEE	18
5. MINIMUM WEIGHTS	18
6. BAIT	18
7. FISHING TIMES	19
8. BREAKDOWN OF TOURNAMENT BOATS	19
9. WEIGH IN AND JUDGING	20
10. PRIZES	20
11. COMMUNICATIONS	21
12. COMPETITORS	21
13. GENERAL	21
14. POINT SCORING	21



1. BOATS AND SKIPPERS (CAPTAINS)

1.1 A list of Tournament Boats and Skippers (Captains) will be supplied by the Tournaments Committee from which the teams will select through a boat draw at the opening briefing.

1.2 Only boats that hold a current, valid Seaworthy Certificate (COF or Local General Certificate) for that year may be used in the Tournament.

1.3 Only Skippers considered to be competent by the SADSAA and the host Province will take part in the Tournament, and they should hold a recognized valid Skippers ticket (COC).

1.4 Each boat will carry a Skipper, a deck hand and an international team consisting of three (3) anglers.

1.5 The Skipper of the boat will be bound by IGFA Rules except that he may not assist the competitors in the making up of terminal tackle or the rigging of baits whilst at sea. Only one person, either Skipper or second crew member, may assist at any one time.

1.6 Skippers will adhere to rules, radio reporting times and procedures as laid down by the organisers.

2. FULL RELEASE TOURNAMENT

This tournament will be a full measure and release (M&R) tournament, and weight allocation per fish will be by the way of a colour coded measuring stick.

3.TACKLE, EQUIPMENT AND RULES.

3.1 This will be a 50lbs (24kg) line class tournament.

3.2 Heavier breaking strain line, other than the prescribed line classes, is permitted on the boat for the exclusive purpose of towing teasers or utilization for leaders and traces.

3.3 Any team member using line with a heavier breaking strain than the line class of the Tournament will result in his entire Teams catch being disqualified for that day. This excludes the line when used as described and covered under 2.1 above or 2.3 below.

3.4 The IGFA weakest link rule will apply as described below:

3.4.1 Monofilament, multifilament, and lead core multifilament lines may be used.

3.4.2 Wire lines are prohibited.

3.4.3 Backing is permitted but may not exceed 130lbs (60kg)

3.4.4 The catch shall be classified under the breaking strength of the first 5 meters (16.5 feet) of line directly preceding the double line, leader, and hook. This section must be comprised of a single, homogenous piece of monofilament line and may not exceed 130lbs (60kg) line class.

3.5 All tackle and gaffs shall conform to IGFA Rules (with additions as stated in these rules) as it applies to the line class used.

3.6 No braid line may be used for the “weak link” but may be used before the weak link as backing.

3.7 Spooning and popping is permissible.

3.8 The use of offset circle hooks is not allowed.

3.9 If fishing with circle hooks, only non-offset circle hooks may be used for all baits.

3.10 The use of rigged artificial lures that have been rigged with treble hooks are permissible as per IGFA rules.

3.11 **NOTE:** Anglers are warned that should they use the minimum length of line as specified in the “weak link” IGFA rule, there may not be sufficient line for testing for record purposes. It is advised that a minimum of 15 meters be used.

3.12 The first 10 fish measured, recorded and released will be deemed as the anglers total quota of fish for the day. Once a fish has been recorded by the skipper on the official weigh sheet, it will be deemed as binding.

3.13 If a fish is measured and recorded and is unable to swim away unscathed, that fish may be boated but NOT brought to the weigh station at all. Such a fish will be utilised or donated to the under-privileged.

3.14 The Skipper remains the Tournament and SADSAA’s referee to ensure the adherence of these rules.

3.15 There will be no more than two (2) lines per angler in the water at any one time

3.16 The team scoring the highest number of points shall be the winner

3.17 Weighing will be as per the allocated colour coded weights of the fish on the supplied measuring stick.

3.18 In the event of a tie, the team with the lesser number of individual qualifying fish will win.

3.19 The results of the Tournament will be decided over the actual number of days fished.

3.20 The Skippers positions over the Tournament will be determined by the SADSAA point scoring system.

4. TOURNAMENT ADJUDICATION COMMITTEE

There shall be a Tournaments Adjudicating Committee consisting of at least three but not exceeding five persons who shall be appointed by the host country and whose names shall be published before the commencement of the Tournament.

5. MINIMUM WEIGHT.

5.1 Minimum sizes will be the legal Legislated sizes for the species prescribed by DFFE but shall not be less than the following:

4.1.1 Longfin Tuna (Albacore) - 10 Kg

4.1.2 Yellow fin Tuna - 20 Kg.

4.1.3 Big Eye Tuna - 20 Kg

4.1.4 Southern Blue Fin - 20Kg

5.2 No angler shall, on any day, catch or be in possession on any boat, of more than the maximum number of fish permitted by current legislation applicable to fish species and total bag limit.

6. BAIT

6.1 10 x 5kg boxes of pilchards will be supplied and available for collection at the beginning of each day. It is the responsibility of the team to collect this.

6.2 No other bait, other than the purchased/supplied by the tournament organisers or bait caught at sea on the day may be used.

6.3 Any bait that was not used for the day can be carried over for the following day.

7. FISHING TIMES

7.1 Fishing times will be from 6h00 to lines up at 15h00 every day except the last day.

7.2 Last day of tournament will be from 6h00 to lines up at 14h00

7.3 All fish must be hooked by the "Lines-Up" time and teams which report by radio, before lines-up time, the fact that a fish is hooked but not yet boated, will be allowed extra time of maximum of 1 (one) hour. Any fish hooked by an angler after "Lines-Up" will be disqualified. No extra time will be allowed on the last day.

7.4 Fishing hours may be adjusted during the Tournament by the organisers if they deem it necessary for the purpose of safety. Should the organisers wish to extend fishing hours beyond the published times, for whatever reason, then all teams must be informed before the launching of the boats on that specific day.

7.5 All teams must report to the scales for weigh-in by not later than the time specified by the organisers, unless the organising committee decide, for reasons of breakdown or rendering assistance to a distress call, to extend the weigh-in time, for that specific craft only. The decisions of the adjudicating committee will be final.

7.6 Should the decision be taken to call the Tournament to a halt by either a "on-sea" or land-based Safety Committee, then all boats will immediately return to the harbour. Any boats fighting fish will immediately cut the line and proceed to the harbour.

7.7 If the Tournament is called off due to a weather or a safety call then no boats taking part in that tournament will be allowed to proceed to sea on their own accord, or if the tournament is called off whilst at sea then no boats participating in the tournament will be allowed to stay out at sea and continue fishing.

8. BREAKDOWN OF TOURNAMENT BOATS

8.1 Should any craft break down during the Tournament this must be reported by radio to the Adjudicating Committee immediately.

8.2 Lost fishing time will not be made up, but the Adjudicating Committee will endeavour to replace or repair the broken down craft as soon as possible.

9. WEIGH-IN AND JUDGING

9.1 Weigh-in will be by clear time stamped photograph or video footage taken by the team or skipper.

9.2 The Official footage must have a clear date and time visible on the video or photograph.

9.3 The entire team and the skipper must be present at the weigh station. The footage must be submitted by the Captain to the Weigh-Master and his decision in all respects is final and binding.

9.4 Each team's catch shall be recorded on a catch return form furnished by the Tournament host. This form must be signed by the team captain, Skipper and Weigh-master at the Weigh-in.

9.5 The angler shall be required to exhibit the bait (lures), rod, reel and any relevant tackle with which the fish was caught, to the Weigh-master, if the Weigh-master so deems it necessary.

9.6 The Adjudicating Committee may investigate and act upon any incident occurring during the Tournament as they deem necessary.

9.7 Any protest, concerning the validity of any catch, shall be filed in writing accompanied by a R1000-00 fee, signed by the protesting team and delivered to the Tournament Adjudicating Committee within one hour of the close of Weigh-in on the day in question.

9.7.1 The decision of the majority of the Adjudicating Committee shall be final.

9.7.2 If the objection is upheld, the protest fee will be returned; if set aside, then the protest fee will be retained by the organizing Tournament Committee and utilized as they deem fit.

10. PRIZES

10.1 Prizes shall be in the form of pins and/or trophies only and shall consist of the following minimum number of awards per Tournament.

10.1.1 1st Place Team - Gold Pins

10.1.4 1st Place Skipper - Gold Pins

10.1.2 2nd Place Team - Silver Pins

10.1.5 2nd Place Skipper - Silver Pins

10.1.3 3rd Place Team - Bronze Pins

10.1.6 3rd Place Skipper - Bronze Pins

10.2 All Teams (including Barbarian teams) participating in an Inter-Provincial, National or International Tournament, shall qualify for the award of the prizes in that tournament.

11. COMMUNICATIONS

All radio communications between Tournament boats and between the organisers and Tournament boats will be initiated by a call up on VHF Marine Channel 71 only, unless otherwise instructed by the organisers.

12. COMPETITORS

12.1 INFRACTION: Any person, including Skippers, guilty of infraction of the rules may be disqualified from participating further in the Tournament and all future Tournaments sanctioned by SADSAA.

12.2 The latest IGFA Rules will apply to all Tournaments and the onus will be on participants to keep themselves informed of the latest rules and amendments.

13. GENERAL

13.1 All anglers will, prior to the commencement of the Tournament, sign an indemnity form, which indemnifies the host Province, SADSAA, the sponsors and any person involved in the Tournament or the organisation thereof.

13.2 Each country must supply an audio recording of their countries National Anthem.

13.3 Acceptances/non-participation to the invitation must be returned by Email, no later than the final date specified by the invite.

14. POINT SCORING.

METHOD OF CALCULATION :

The points for each individual fish will be calculated as follows:

1. The individual fish weight in kilograms divided by the line strength in kilograms.
2. The result is then squared and then multiplied by 32.

EXAMPLE: A 50kg Yellowfin Tuna caught on 24kg Line Class

1. 50kg divided by 24kg Line Class = 2.08
2. 2.08 squared = 4.33 which is then multiplied by 32 = 138.56 points

EXPRESSION OF INTEREST

Countries who are considering participation in the Tournament are cordially invited to complete this form and email it to the email address below.

You are under no obligation, but by providing the organizers with a reasonable early indication of your plans, you will assist them to arrange the arrival of the fish in good time.

EFSA / SADSAA International Big Game Tournament - Simons Town, Cape Town, South Africa, May 2024

Name of Country: _____

Name of Team: _____

E Mail Address: _____

Team members

First Name

Surname

Shirt Size

1 _____

2 _____

3 _____

E-mail address of leading newspapers in your country: _____

Any company attending the function with you:

Names and Surname

Any special dietary requirements: _____

Please email the above filled in document to:

**secretary@sadsaa.co.za
tournaments@sadsaa.co.za
president@sadsaa.co.za**



ENTRY FORM

EFSA / SADSAA International Big Game Tournament – Simons Town, Cape Town, South Africa, May 2024

Name of Country: _____

Name of Captain: _____

Name of Team: _____

E Mail Address: _____

Team members

First and Last name:

Email Address:

Shirt Size

1 _____

2 _____

3 _____

Any special dietary requirements: _____

**Please email the above filled in document to:
secretary@sadsaa.co.za
tournaments@sadsaa.co.za
president@sadsaa.co.za**



TOURNAMENT INFORMATION

VENUE: False Bay Yacht Club, Simon's Town Harbor, Cape Town

DATES: 6th to 10th May 2024 (4 days fishing)

OPENING CEREMONY: Monday 6th May 2024, 18h30

ENTRY FEE: €5885 Euro per team inclusive of:

Opening & closing functions,

Breakfasts,

Lunch Packs, which includes refreshments on the boat,

Dinner for the anglers each evening.

Boats (and 300ltrs fuel per day) are included, between 25 and 32 foot.

Bait (10 x 5kg boxes of bait per day)

But excludes: Accommodation for teams.

REGISTRATION: On arrival at the venue the Captain of each team must register with the Tournament Secretary, giving full names of their team.

All anglers must sign indemnities.

Registration facilities will be available from 16h00 on Monday 6th May

DRESS CODE: Opening & Closing Ceremony – Full Step Out Uniforms.

SKIPPER'S BRIEFING: There will be a compulsory team captain's and skipper's briefing at 18h30 on Monday evening, 6th of May. Boat draw will also be done.

PRIZES: Will be medals, trophies and pins.

PRIZE GIVING: The prize giving will take place at False Bay Yacht Club, Simon's Town at 19h00, 10th May 2024. It is compulsory for all teams to be present. Requests for extra guests must be made to the organizers at least 1 week beforehand and will be charged for.

RULES: IGFA/SADSAA rules will apply, as per SADSAA Brochure.

TEAMS: Each team will consist of three (3) anglers.

BAIT: Bait will be supplied each morning before departing from the docks. Bait may be carried over each day.

FUEL: Each team will be allocated 300l fuel, per official fishing day.

FISHING TIMES:

- (i) Breakfast & weather call from 05:30
- (ii) Launching from 05:45
- (iii) Depart from harbor at 06:00
- (iv) Lines up at 15:00, except on the final day, when lines up will be at 14:00 however these times may be subject to change by the Tournaments Committee taking into consideration number of fishing days and weather forecasts
- (v) Weigh station will close at 18h00 daily except on the final day when it will close at 17h00.

WEATHER: The weather committee will make a decision on the weather each day from 05h30.

THE WEATHER COMMITTEE AT SEA WILL USE AN ALTERNATE CHANNEL 69 & KAVI COMM WHEN A DECISION NEEDS TO BE MADE AND NO OTHER BOAT MAY GET INVOLVED IN THE DECISION.

They may decide to call the competition off or shorten the fishing hours for any day, if weather conditions so require. Any fish still being fought that was hooked prior to this call must be reported to the control boat or Ski Boat Mobile immediately. In this event, the fish must be cut off immediately.

NB: ALL QUERIES REGARDING THESE RULES MUST BE RESOLVED IN WRITING, AT THE LATEST, 14 DAYS PRIOR TO THE START OF THE TOURNAMENT.

Tournament Committee is still to be announced.



PROGRAMME OF EVENTS

OPENING FUNCTION: Monday 6th MAY

16h00 Registration & Handout
17h30 Team Photographs
18h30 Captains & Skippers Briefing
19h00 Opening Announcements
19h30 Team Presentations
19h55 Skippers Presentation
20h00 Dinner

CLOSING CEREMONY: Friday 10th MAY 2022

14h00 Lines up
15h00 Weigh station open
17h00 Weigh station closes
19h00 Closing Ceremony
20h00 Dinner

Daily Program for Fishing Days

05h30 Breakfast at False Bay Yacht Club
05h30 Weather call at FBYC
05h30 Lunch box collection
05h30 Bait Collection
05h45 Launching
06h00 Depart from harbor
11h00 Boat Catch Report
13h00 Boat Catch Report
15h00 Lines Up (subject to change)
16h00 Weigh station open
18h00 Weigh station close (subject to change)
18h30 Dinner at FBYC

A BIG THANKS TO OUR SPONSORS



DP Burger
General Manager/ Cellarmaster

www.glenwoodvineyards.co.za
+27 21 876 2044

Home of Platter 5 star Chardonnay's



**FALSE BAY
YACHT CLUB**

34°11.541'S 18°26.047'E



We Deliver!
Free Delivery on purchases
of R300 or more
T's & C's Apply.



EISLEBEN CENTRE
021 371 4171

CLAREMONT
021 0233 568

WESTGATE MALL
021 371 9488

DELIVERIES AVAILABLE MON to SAT *SELECTED AREAS ONLY*



World Class Wines, Sushi & Service with Breathtaking Views

We are a boutique winery located off the beaten track close to Franschhoek. We invite you to have our Wine Ambassadors guide you through our selection of tasting options (either in our tasting room at the winery or up the mountain) while our Master Sushi Chef prepares authentic sushi dishes for you. Our vineyards are surrounded by pristine areas of indigenous "fynbos" which we actively protect through conservation of land and the use of sustainable farming practices. Our relaxed, tranquil environment will make your visit a truly memorable experience.



021 826 2044
info@glenwoodvineyards.co.za
www.glenwoodvineyards.co.za



**Africa
Travel Co**



**POWDER
COATING
WORLD**

3 Link Close
Montague Gardens
7441
Tel: 021 552-3495



FRESH OR SALT WATER TACKLE, WE HAVE IT ALL!
EXPERT ADVICE, GREAT PRICES AND A LARGE RANGE
OUR TUCKERS CREW IS AT YOUR SERVICE!

WWW.TUCKERSTACKLE.CO.ZA



FOLLOW OUR SOCIAL MEDIA FOR REGULAR
UPDATES ON NEW STOCK AND MORE!

f Tuckers Tackle

Instagram @tuckerstackle

81 Main Rd, Diep River, Cape Town
Unit 14 & 15, Okavango Junction, Brackenfell

Tel: 021 715 5626
Info@tuckerstackle.co.za